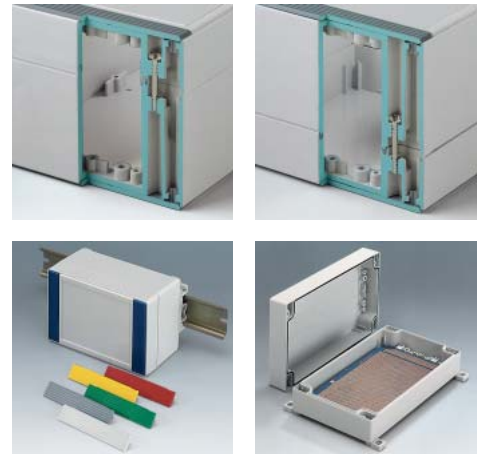
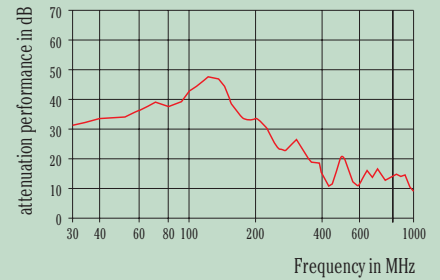




ROBUST-BOX C 21 12 202 with al-metallization  
(al metallization on demand)



## ROBUST VARIETY

### THE PRODUCT

Conceived as a dual case system, the ROBUST-BOX range offers a variety of installation options. Both case shells are equipped with premoulded threads. You as the user can now decide whether the flat or the high part of the case is to be used as the bottom part.

### APPLICATIONS

This case system is especially suitable for a wide range of **electric installations**, e.g. heating, climate, ventilation, machine building and construction units. But it can also be used in the **electronics sector**, e.g. as push-button case, for controllers, sensors in the interior etc.

### PROTECTION CLASS IP 66

With sealing (supplied with the case).

### YOUR ADVANTAGE

Two standard materials (UL 94 HB): ABS – approved as a terminal mounting case or as polycarbonate – a solid and robust case, with high heat resistance for use in adverse environments.

Easy-assembly construction. The case shells can be used as either top or base section.

The cover fixings are outside of the sealed area. The fixing screws are rust proof and captured in the cover.

There is an area recessed by min. 0.8 mm for the mounting of membrane keyboards.

Colourful cover strips for coding (as an alternative to the standard version in light grey).

Applicable as desktop case and wall-mounting case.

### STANDARD COLOURS

One-coloured:

Light grey, RAL 7035.

Two-coloured:

Case light grey, RAL 7035. cover strips (accessory) in

silver grey, RAL 7001 /

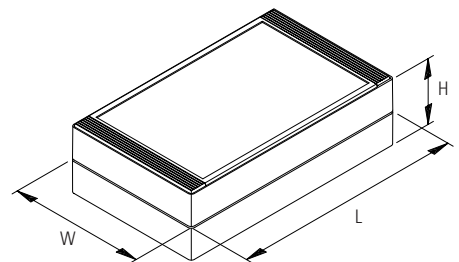
red, RAL 3020 /

yellow, RAL 1023 /

green, RAL 6024 /

blue, RAL 5017.

Detailed drawings see our website.



## ROBUST-BOX – WIDTH 80

Outside dim. in mm

Length	Width	Height
80	80	60/80
120	80	60/80
160	80	60/80
240	80	60/80



## ROBUST-BOX – WIDTH 120

Outside dim. in mm

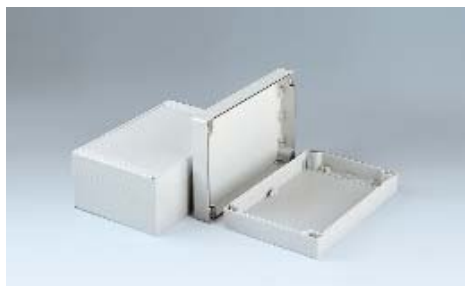
Length	Width	Height
120	120	60/90
200	120	60/90
240	120	60/90



## ROBUST-BOX – WIDTH 160

Outside dim. in mm

Length	Width	Height
160	160	60/90
240	160	60/90
240	160	120



## ROBUST-BOX – WIDTH 200

Outside dim. in mm

Length	Width	Height
300	200	80/120/160



## ROBUST-BOX – WIDTH 240

Outside dim. in mm

Length	Width	Height
360	240	80/120/160



## COMPLETE ENCLOSURES\*1

Part-No.		ROBUST-BOX	Outside dim. in mm			Equipment (L x W in mm)		
version I (ABS)	version II (PC)		L	W	H	max. size of PCB*2 shell "T"	max. size of PCB*2 shell "G"	recessed area
C 20 08 081	C 20 08 082	width 80	80	80	60	40 x 65	40 x 65	43 x 66
C 21 08 081	C 21 08 082		80	80	80	40 x 65	40 x 65	43 x 66
C 20 08 121	C 20 08 122		120	80	60	80 x 65	80 x 65	83 x 66
C 21 08 121	C 21 08 122		120	80	80	80 x 65	80 x 65	83 x 66
C 20 08 161	C 20 08 162		160	80	60	120 x 65	120 x 65	123 x 66
C 21 08 161	C 21 08 162		160	80	80	120 x 65	120 x 65	123 x 66
C 20 08 241	C 20 08 242		240	80	60	200 x 65	200 x 65	203 x 66
C 21 08 241	C 21 08 242		240	80	80	200 x 65	200 x 65	203 x 66
C 20 12 121	C 20 12 122	width 120	120	120	60	81 x 105	80 x 105	83 x 106
C 21 12 121	C 21 12 122		120	120	90	80 x 105	80 x 105	83 x 106
C 20 12 201	C 20 12 202		200	120	60	160 x 105	160 x 105	163 x 106
C 21 12 201	C 21 12 202		200	120	90	160 x 105	160 x 105	163 x 106
C 20 12 241	C 20 12 242		240	120	60	201 x 105	200 x 105	203 x 106
C 21 12 241	C 21 12 242		240	120	90	200 x 105	200 x 105	203 x 106
C 20 16 161	C 20 16 162	width 160	160	160	60	120 x 145	120 x 145	123 x 146
C 21 16 161	C 21 16 162		160	160	90	120 x 145	120 x 145	123 x 146
C 20 16 241	C 20 16 242		240	160	60	200 x 145	201 x 145	203 x 146
C 21 16 241	C 21 16 242		240	160	90	200 x 145	201 x 145	203 x 146
C 24 16 241	C 24 16 242	width 200	240	160	120	200 x 142	203 x 149	203 x 146
C 21 20 301	—		300	200	80	267 x 167	265 x 168	263 x 172
C 24 20 301	—		300	200	120	267 x 165	265 x 168	263 x 172
C 25 20 301	—		300	200	160	267 x 165	265 x 167	263 x 172
C 21 24 361	—	width 240	360	240	80	328 x 207	325 x 208	323 x 212
C 24 24 361	—		360	240	120	327 x 205	325 x 208	323 x 212
C 25 24 361	—		360	240	160	327 x 205	324 x 207	323 x 212

## SEPARATE PARTS (SINGLE PIECES)

Shell width 80*3, ABS RAL 7035			Shell width 80*3, PC RAL 7035			L x W in mm		
T (H = 40)	G (H = 20)	G (H = 40)	T (H = 40)	G (H = 20)	G (H = 40)			
C 10 80 801	C 00 80 801	C 20 80 801	C 10 80 802	C 00 80 802	C 20 80 802	80 x 80		
C 10 81 201	C 00 81 201	C 20 81 201	C 10 81 202	C 00 81 202	C 20 81 202	120 x 80		
C 10 81 601	C 00 81 601	C 20 81 601	C 10 81 602	C 00 81 602	C 20 81 602	160 x 80		
C 10 82 401	C 00 82 401	C 20 82 401	C 10 82 402	C 00 82 402	C 20 82 402	240 x 80		
Shell width 120*3, ABS RAL 7035			Shell width 120*3, PC RAL 7035			L x W in mm		
T (H = 30)	T (H = 60)	G (H = 30)	T (H = 30)	T (H = 60)	G (H = 30)			
C 01 21 201	C 21 21 201	C 11 21 201	C 01 21 202	C 21 21 202	C 11 21 202	120 x 120		
C 01 22 001	C 21 22 001	C 11 22 001	C 01 22 002	C 21 22 002	C 11 22 002	200 x 120		
C 01 22 401	C 21 22 401	C 11 22 401	C 01 22 402	C 21 22 402	C 11 22 402	240 x 120		
Shell width 160*3, ABS RAL 7035			Shell width 160*3, PC RAL 7035			L x W in mm		
T (H = 30)	T (H = 60)	G (H = 30)	G (H = 60)	T (H = 30)	T (H = 60)		G (H = 30)	G (H = 60)
C 01 61 601	C 21 61 601	C 11 61 601	—	C 01 61 602	C 21 61 602	C 11 61 602	—	160 x 160
C 01 62 401	C 21 62 401	C 11 62 401	C 31 62 401	C 01 62 402	C 21 62 402	C 11 62 402	C 31 62 402	240 x 160
Shell width 200*3, ABS RAL 7035			Shell width 200*3, PC RAL 7035			L x W in mm		
T (H = 40)	T (H = 80)	G (H = 40)	G (H = 80)					
C 12 03 001	C 42 03 001	C 22 03 001	C 52 03 001	300 x 200				
Shell width 240*3, ABS RAL 7035			Shell width 240*3, PC RAL 7035			L x W in mm		
T (H = 40)	T (H = 80)	G (H = 40)	G (H = 80)					
C 12 43 601	C 42 43 601	C 22 43 601	C 52 43 601	360 x 240				

For case shells					Accessories (only if separate parts are ordered)
width 80	width 120	width 160	width 200	width 240	Article
C 22 99 001	C 22 99 001	C 22 99 001	—	—	Assembly kit each 4 screws for the case assembly and for mounting PCBs
—	—	—	C 22 99 002	C 22 99 002	Assembly kit each 6 screws for the case assembly + 8 for PCBs, centre covers
C 22 00 801	C 22 01 201	C 22 01 601	C 22 02 001	C 22 02 401	Cover strips without holes PC, light grey, RAL 7035, each 1 pc*4
C 22 10 801	C 22 11 201	C 22 11 601	C 22 12 001	C 22 12 401	Cover strips with holes PC, light grey, RAL 7035, each 1 pc*4

## ACCESSORIES (UNIVERSAL)

Article	For enclosure ROBUST-BOX	Version / Application	Part-No.	
① Case feet	for all case sizes	simply snap-in mechanism*5 when using the case for desktop application, 4 pcs	C 22 99 018	
② Wall-mounting brackets	for all case sizes	for exterior wall-mounting, 4 pcs incl. fixing screws	C 22 99 028	
③ Securing hinge	width 80/120/160	for securing the cover, e.g. during servicing, 2 pcs incl. fixing screws	C 22 99 031	
④ Hinge	for all case sizes	additional machining (drilling) required, 2 complete hinges	C 22 99 088	
⑤ PCB support	width 120	for mounting pre-assembled PCB units, 2 pcs incl. fixing screws	C 22 99 058	
	width 80/160/200/240	for mounting pre-assembled PCB units, 4 pcs incl. fixing screws	C 22 99 068	
⑥ Security kit	width 80	for use with lead tags,	C 22 99 048	
	width 120	each 4 plugs, 2 cover strips with holes for the top in light grey	C 22 99 042	
	width 160		C 22 99 046	
	for all case sizes	plug as a single part, 1 plug	C 22 99 040	
⑦ DIN-Rail DIN EN 60 715 TH35 and DIN EN 60 715 TH15 (type TH35 cannot be used with ROBUST-BOX, width 80)	length 80	for fixing of components/terminals in the case, 1 pc	TH35	TH15
	length 120	for fixing of components/terminals in the case, 1 pc	–	C 22 99 609
	length 160	for fixing of components/terminals in the case, 1 pc	C 22 99 419	C 22 99 619
	length 200	for fixing of components/terminals in the case, 1 pc	C 22 99 429	C 22 99 629
	length 240	for fixing of components/terminals in the case, 1 pc	C 22 99 439	C 22 99 639
	width 120	for fixing of components/terminals in the case, 1 pc	C 22 99 449	C 22 99 649
	width 160	for fixing of components/terminals in the case, 1 pc	C 22 99 459	C 22 99 659
			C 22 99 469	C 22 99 669

Article	Version / Application	for ROBUST-BOX		
		width 80	width 120	width 160
⑧ Fastening elements to DIN-Rails	according to DIN EN 60 715 TH15 and G32, 2 pcs incl. assembly kit	C 22 01 088	C 22 03 128	C 22 04 168
⑨ Cover strips (optionally supplied to the light grey coloured standard versions, simply clip into top or base)	silver grey, RAL 7001, 2 pcs for the top, 2 pcs for the base*6	C 22 01 082	C 22 03 123	C 22 04 162
	red, RAL 3020, 2 pcs for the top, 2 pcs for the base*6	C 22 01 084	C 22 03 124	C 22 04 164
	yellow, RAL 1023, 2 pcs for the top, 2 pcs for the base*6	C 22 01 085	C 22 03 125	C 22 04 165
	green, RAL 6024, 2 pcs for the top, 2 pcs for the base*6	C 22 01 086	C 22 03 126	C 22 04 166
	blue, RAL 5017, 2 pcs for the top, 2 pcs for the base*6	C 22 01 087	C 22 03 127	C 22 04 167



\*1 case assembly with 4 screws (width 80/120/160) and 6 screws (width 200/240)

Supply: two case shells (one with tongue; one with groove and gasket), each two pairs of cover strips (2 for the top, 2 with holes for the base) in light grey and 1 assembly kit.

\*2 L x W in mm. The dimensions were measured as clearance between the guide ridges (PCB assembly by means of PCB supports, accessories).

To assemble the PCBs on the fastening pillars side L (length) the PCBs must be approx. 30 mm longer (cutouts necessary on the 4 corners in accordance with the case screw fittings).

\*3 T = case shell with tongue, G = case shell with groove

For a complete case you need 1 shell with tongue and one with groove and gasket. Please order assembly kit and cover strips separately, see page 38.

\*4 4 cover strips required for each case. Cover strips with holes suitable for case feet or security kit/security plug (separate articles)

\*5 because of levelling out the length's tolerance of the cover strips we recommend to glue the case feet of sizes 200 x 300 and 240 x 360 mm

\*6 the cover strips for the base have holes for the case feet or security kit/security plug (separate article)

**Important: With additional machining please indicate the parts with or without groove.**

Information: ROBUST-BOX with transparent top on demand.